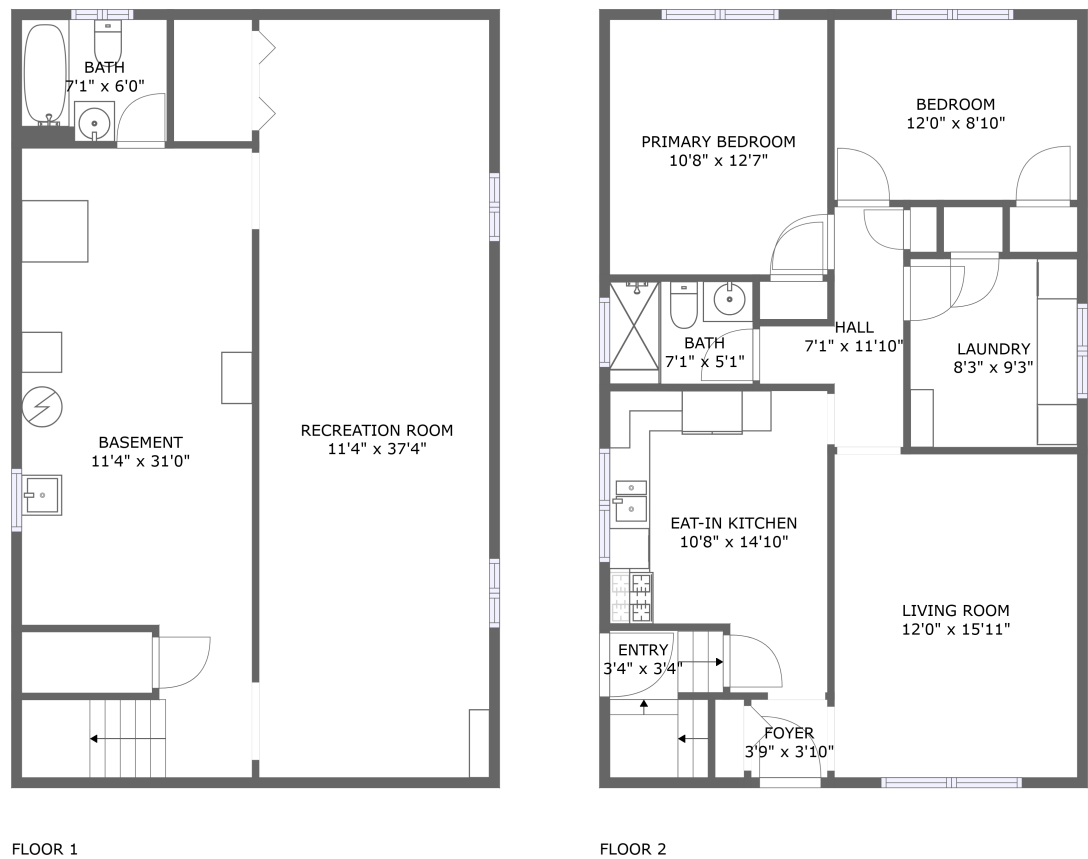


Home report

744 Water Street, Northcrest, Peterborough, Peterborough
County, Ontario, Canada, K9H 3N6



Total Area: 921 sq. ft
Below Ground: 0 sq. ft, Floor 2: 921 sq. ft
Excluded: Recreationroom 467 sq. ft, Undefined 56 sq. ft, Bath 53 sq. ft, Basement 347 sq. ft

Property summary

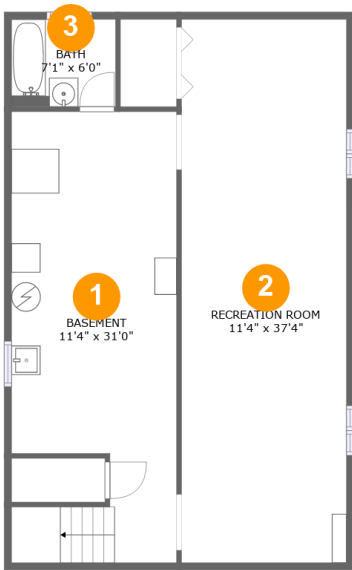
 **2** Floors

 **2** Bedrooms

 **2** Bathrooms

Home report

744 Water Street, Northcrest, Peterborough, Peterborough
County, Ontario, Canada, K9H 3N6



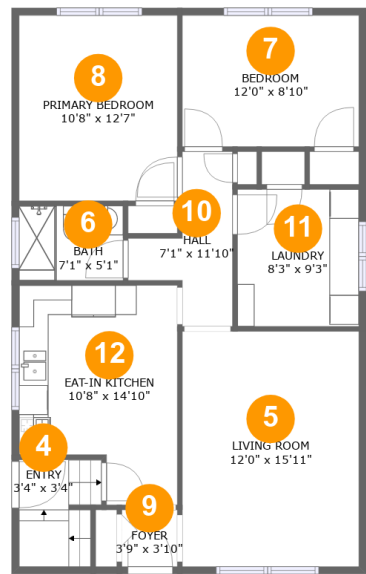
Room dimensions

Floor 1 Below ground Total:0sqft Excluded: 923sqft

#		Max Dimensions	sqft	Included
1	Basement	11'4" x 31'0"	327 sq. ft	No
2	Recreation Room	11'4" x 37'4"	424 sq. ft	No
3	Bath	7'1" x 6'0"	43 sq. ft	No

Home report

744 Water Street, Northcrest, Peterborough, Peterborough
County, Ontario, Canada, K9H 3N6



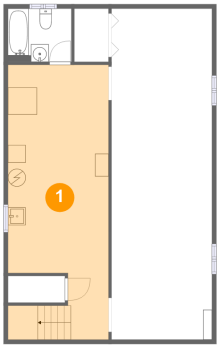
Room dimensions

Floor 2 Total:921sqft Excluded: 0sqft

#		Max Dimensions	sqft	Included
4	Entry	3'4" x 3'4"	37 sq. ft	Yes
5	Living Room	12'0" x 15'11"	191 sq. ft	Yes
6	Bath	7'1" x 5'1"	36 sq. ft	Yes
7	Bedroom	12'0" x 8'10"	106 sq. ft	Yes
8	Primary Bedroom	10'8" x 12'7"	135 sq. ft	Yes
9	Foyer	3'9" x 3'10"	15 sq. ft	Yes
10	Hall	7'1" x 11'10"	51 sq. ft	Yes
11	Laundry	8'3" x 9'3"	76 sq. ft	Yes
12	Eat-in Kitchen	10'8" x 14'10"	139 sq. ft	Yes

744 Water Street, Northcrest, Peterborough, Peterborough
County, Ontario, Canada, K9H 3N6

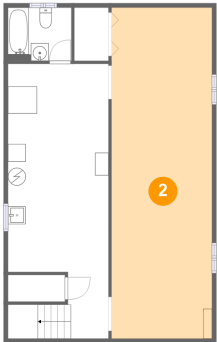
1 Floor 1 - Basement



Max Dimensions: 11'4" x 31'0"
Calculated Area: 327 sq. ft
Included: No

Heated: Yes
Finished: No
Enclosed: Yes
Contiguous: Yes
Permitted: Yes
Wet space: No
Addition: No
Conversion: No

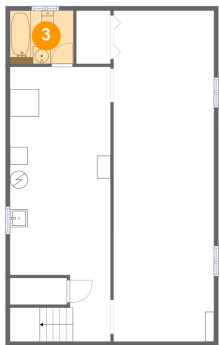
2 Floor 1 - Recreation Room



Max Dimensions: 11'4" x 37'4"
Calculated Area: 424 sq. ft
Included: No

Heated: Yes
Finished: Yes
Enclosed: Yes
Contiguous: No
Permitted: Yes
Wet space: No
Addition: No
Conversion: No

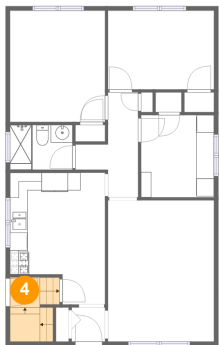
3 Floor 1 - Bath



Max Dimensions: 7'1" x 6'0"
Calculated Area: 43 sq. ft
Included: No

Heated: Yes
Finished: Yes
Enclosed: Yes
Contiguous: No
Permitted: Yes
Wet space: Yes
Addition: No
Conversion: No

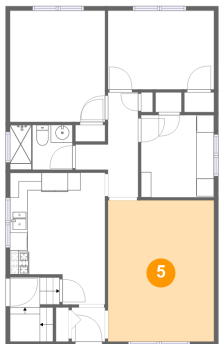
4 Floor 2 - Entry



Max Dimensions: 3'4" x 3'4"
Calculated Area: 37 sq. ft
Included: Yes

Heated: Yes
Finished: Yes
Enclosed: Yes
Contiguous: Yes
Permitted: Yes
Wet space: No
Addition: No
Conversion: No

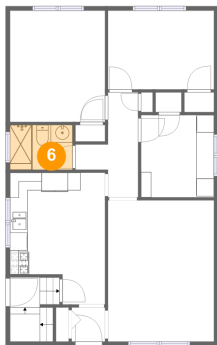
5 Floor 2 - Living Room



Max Dimensions: 12'0" x 15'11"
Calculated Area: 191 sq. ft
Included: Yes

Heated: Yes
Finished: Yes
Enclosed: Yes
Contiguous: Yes
Permitted: Yes
Wet space: No
Addition: No
Conversion: No

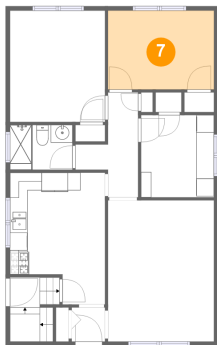
6 Floor 2 - Bath



Max Dimensions: 7'1" x 5'1"
Calculated Area: 36 sq. ft
Included: Yes

Heated: Yes
Finished: Yes
Enclosed: Yes
Contiguous: Yes
Permitted: Yes
Wet space: Yes
Addition: No
Conversion: No

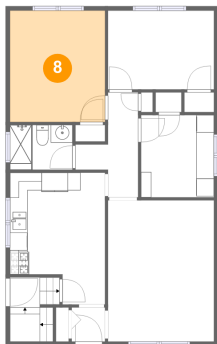
7 Floor 2 - Bedroom



Max Dimensions: 12'0" x 8'10"
Calculated Area: 106 sq. ft
Included: Yes

Heated: Yes
Finished: Yes
Enclosed: Yes
Contiguous: Yes
Permitted: Yes
Wet space: No
Addition: No
Conversion: No

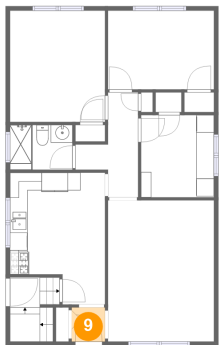
8 Floor 2 - Primary Bedroom



Max Dimensions: 10'8" x 12'7"
Calculated Area: 135 sq. ft
Included: Yes

Heated: Yes
Finished: Yes
Enclosed: Yes
Contiguous: Yes
Permitted: Yes
Wet space: No
Addition: No
Conversion: No

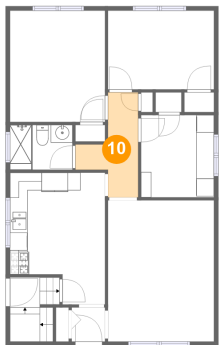
9 Floor 2 - Foyer



Max Dimensions: 3'9" x 3'10"
Calculated Area: 15 sq. ft
Included: Yes

Heated: Yes
Finished: Yes
Enclosed: Yes
Contiguous: Yes
Permitted: Yes
Wet space: No
Addition: No
Conversion: No

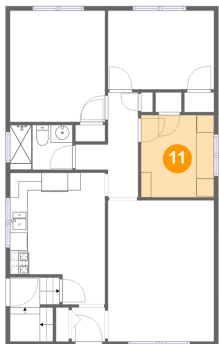
10 Floor 2 - Hall



Max Dimensions: 7'1" x 11'10"
Calculated Area: 51 sq. ft
Included: Yes

Heated: Yes
Finished: Yes
Enclosed: Yes
Contiguous: Yes
Permitted: Yes
Wet space: No
Addition: No
Conversion: No

11 Floor 2 - Laundry

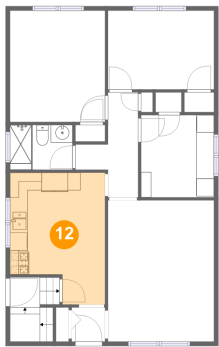


Max Dimensions: 8'3" x 9'3"
Calculated Area: 76 sq. ft
Included: Yes

Heated: Yes
Finished: Yes
Enclosed: Yes
Contiguous: Yes
Permitted: Yes
Wet space: No
Addition: No
Conversion: No

744 Water Street, Northcrest, Peterborough, Peterborough
County, Ontario, Canada, K9H 3N6

12 Floor 2 - Eat-in Kitchen



Max Dimensions: 10'8" x 14'10"
Calculated Area: 139 sq. ft
Included: Yes

Heated: Yes
Finished: Yes
Enclosed: Yes
Contiguous: Yes
Permitted: Yes
Wet space: No
Addition: No
Conversion: No