

AVAILABLE FOR RENT PRIME RESTAURANT SPACE 373 CHURCH ST, TORONTO



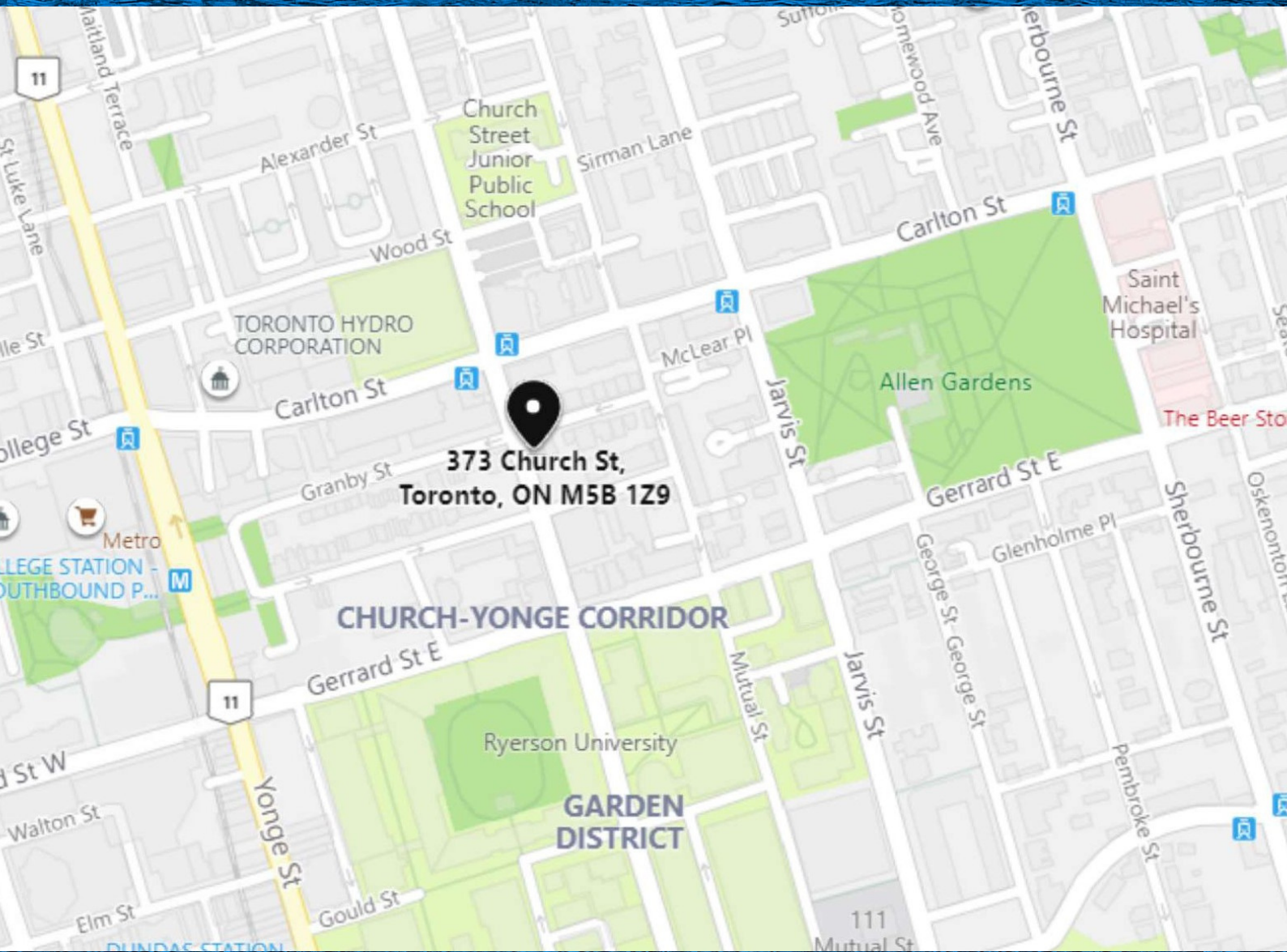
SGA Retail Services - Sutton Group Admiral Realty
Retail Leasing and Investment Sales



DETAILS

- Available Space: Ground floor unit, 1,461 SFT
Fully equipped pizza restaurant
- Net Asking Rate: \$50.00 PSF
- Additional Rent: \$15.44 PSF
- Occupancy: Immediately

HIGHLIGHTS



Located on the east side of the Church St just next to sprawling Ryerson University Campus and Maple Leaf Gardens.

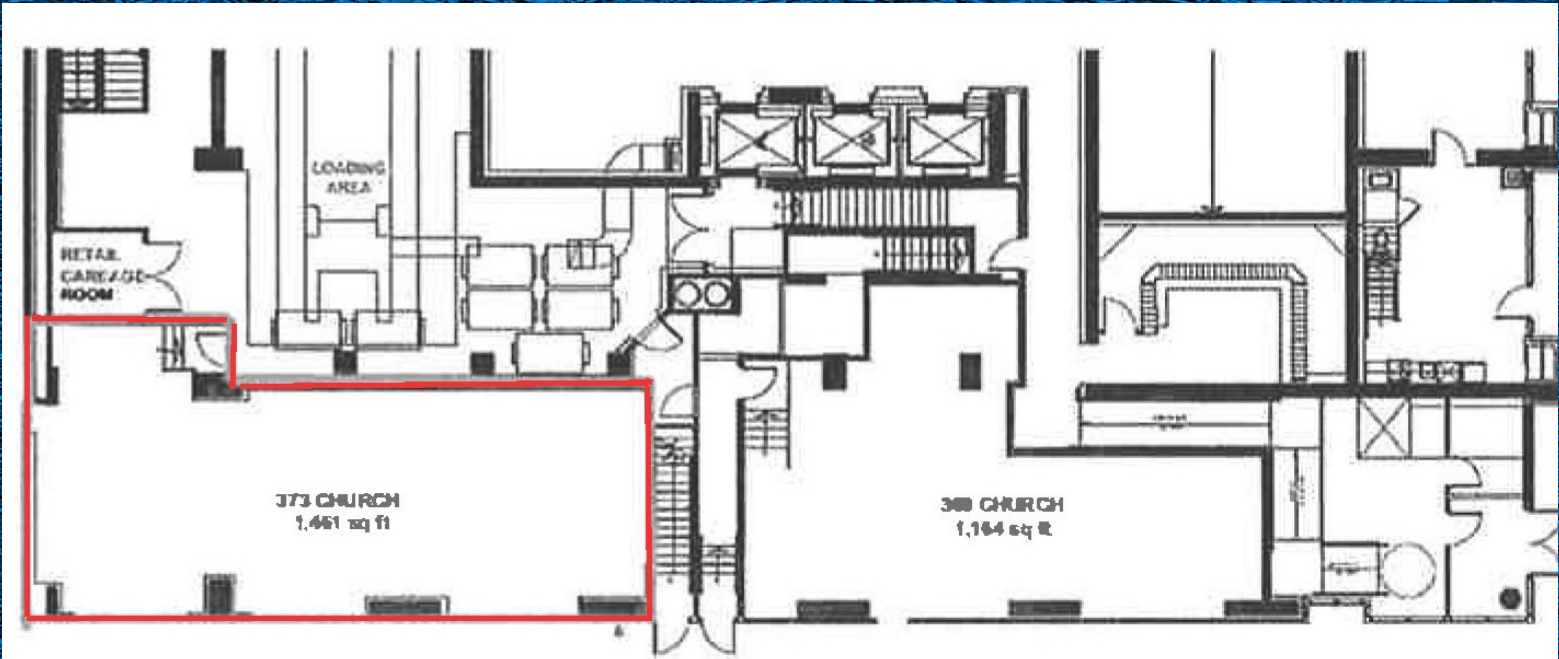
Situated at the base of of 31 storey condominium with 387 apartments. Surrounded by unsurpassed population density : high-rise condominiums, 5 student residences and several hotels

- Premium location, steps from busiest intersection and Toronto's focal point - Dundas Square.
- Contemporary design pizza restaurant. Extensive leasehold improvements.
- Daytime population: 186,000 in 3 km radius.
- Median age: 35 years in 3 km radius
- Household spending \$103,000 in 3 km radius

INTERIOR



SITE PLAN



CHURCH STREET

FOR MORE INFORMATION, PLEASE CONTACT :

BORIS BARANDICH
VICE PRESIDENT
SALES REPRESENTATIVE
bbarandich@gmail.com

COMMERCIAL DIVISION
SUTTON GROUP ADMIRAL REALTY
D: 647-204-7949
O: 437-886-9924