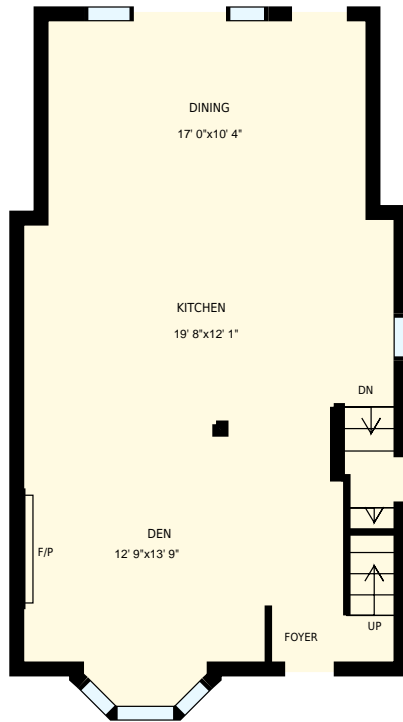


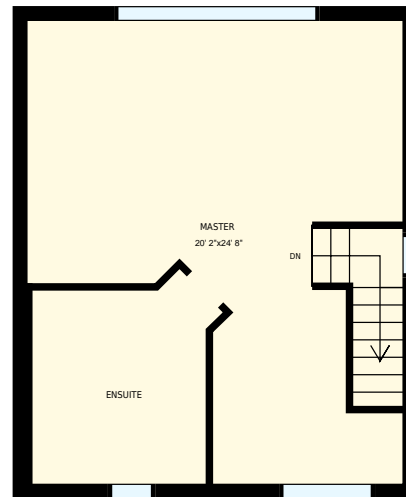


19_elma_street_toronto_on

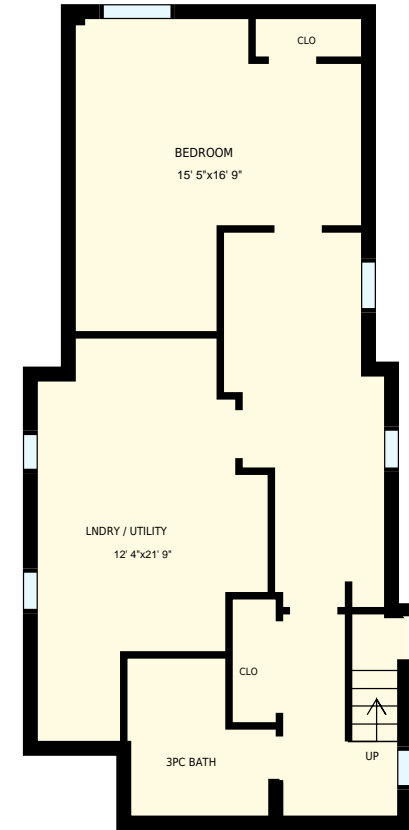
Total Exterior Area Above Grade 1366 sq. ft



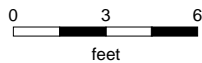
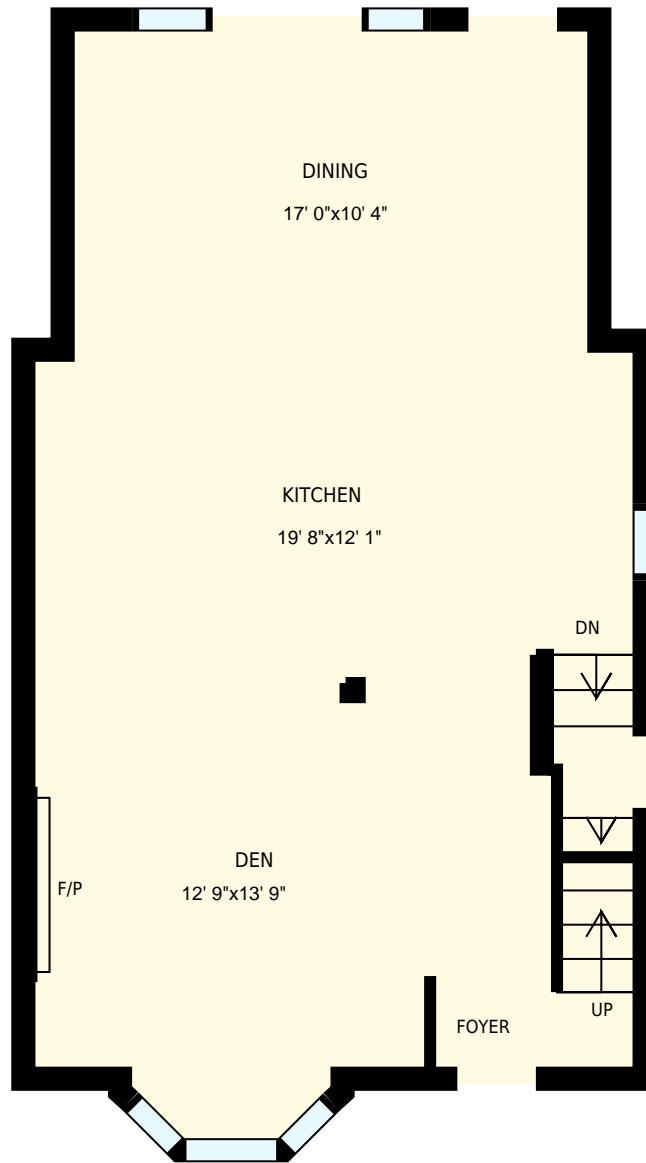
Main floor
Exterior Area 775 sq. ft



2nd floor
Exterior Area 591 sq. ft



Basement

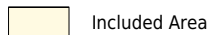


19_elma_street_toronto_on

PREPARED FOR:
Randy Yetman
Broker
RE/MAX West Realty Inc., Brokerage

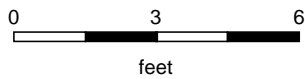
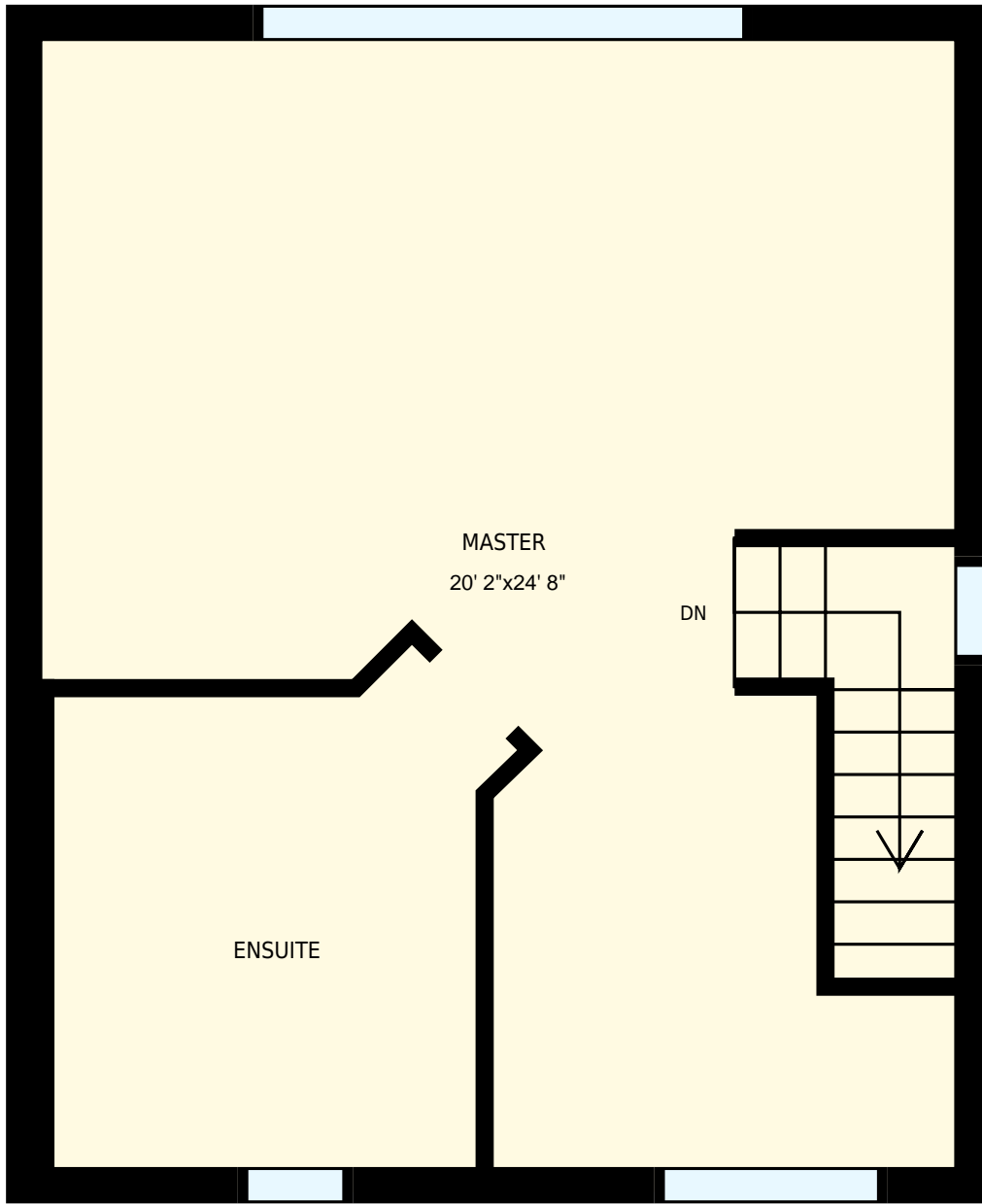
Main floor

Interior Area 676 sq. ft
Exterior Area 775 sq. ft



PREPARED ON:
Nov, 2016

All room dimensions and floor areas must be considered approximate and are subject to independent verification.
For method of measurement please see <https://youriguide.com/measure/>.



19_elma_street_toronto_on
2nd floor

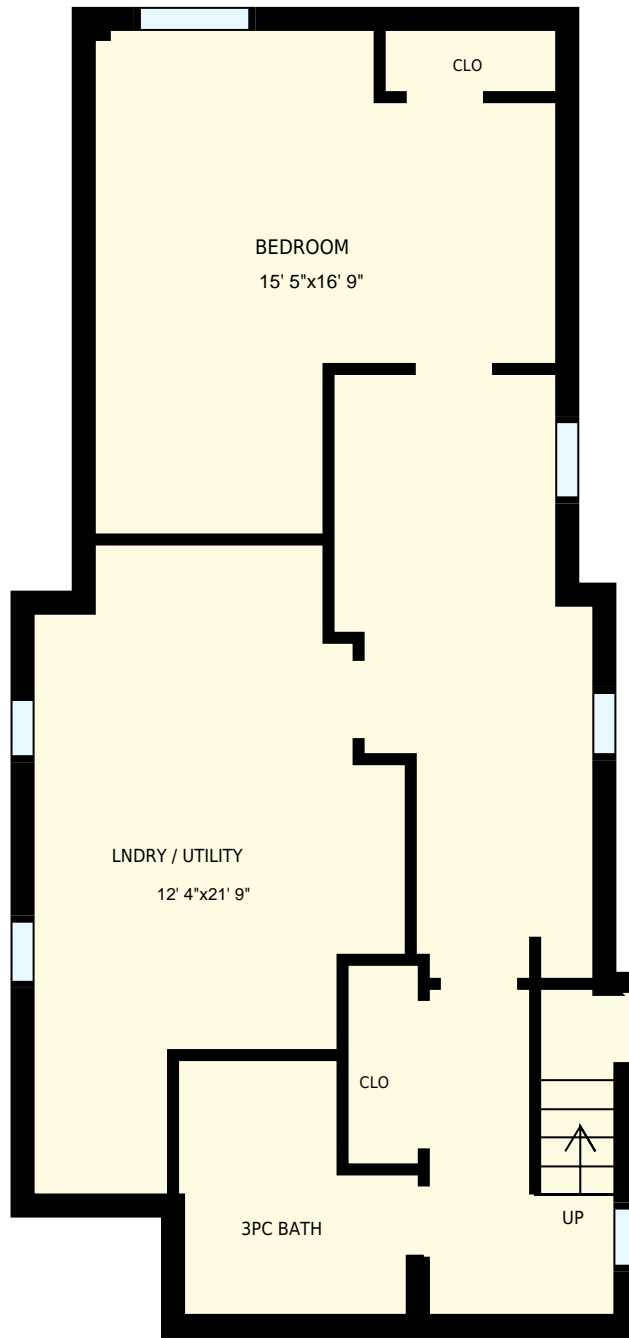
PREPARED FOR:
Randy Yetman
Broker
RE/MAX West Realty Inc., Brokerage

Interior Area 511 sq. ft
Exterior Area 591 sq. ft



PREPARED ON:
Nov, 2016

All room dimensions and floor areas must be considered approximate and are subject to independent verification.
For method of measurement please see <https://youriguide.com/measure/>.



19_elma_street_toronto_on
Basement

PREPARED FOR:
Randy Yetman
Broker
RE/MAX West Realty Inc., Brokerage

Interior Area 732 sq. ft
Exterior Area Included Area

PREPARED ON:
Nov, 2016

All room dimensions and floor areas must be considered approximate and are subject to independent verification.
For method of measurement please see <https://youriguide.com/measure/>.